

# Status for nationale forsøg 2022

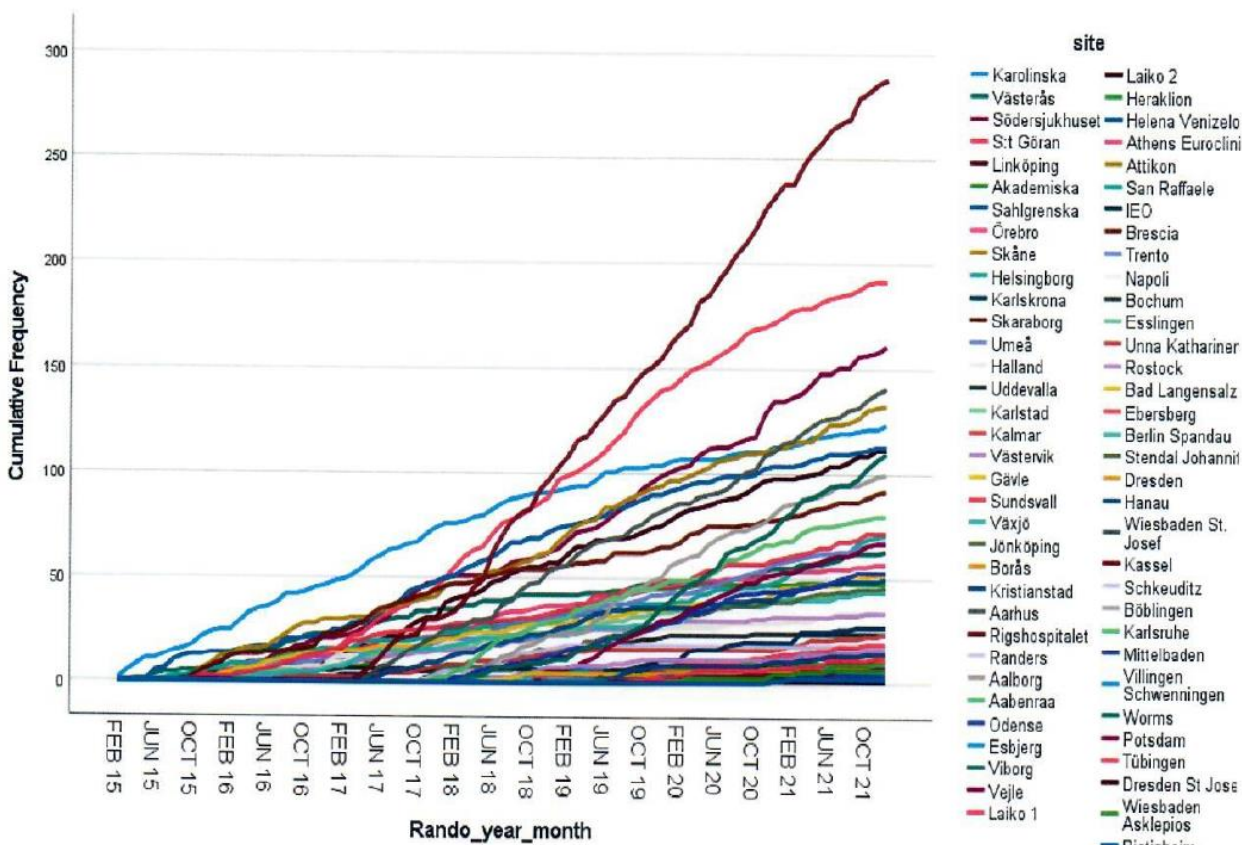
## Kirurgi

Tove Holst Filtenborg Tvedskov  
Klinisk lektor, overlæge, dr.med., Ph.d.  
Brystkirurgisk afdeling  
Rigshospitalet og Herlev og Gentofte Hospital

# SENOMAC studiet

Survival and axillary recurrence following sentinel node-positive breast cancer without completion axillary lymph node dissection – the SENOMAC trial. A randomized study of patients with sentinel node macrometastasis

Lukket for inklusion pr 31/12-2021, Samlet inkluderet 2782 pt, heraf 1/3 fra Danmark



Center	Antal
Herlev/Rigshospitalet	288
Århus	141
Viborg	110
Ålborg	100
Åbenrå	80
Vejle	67
Odense	53
Randers	18
Esbjerg	16
Roskilde/Ringsted	0
<b>I alt</b>	<b>873</b>

- Overlevelse publiceres enten når der er **190 døde** eller **efter 5 år**.
- Recidiv og QoL publiceres **efterår 2023** (efter indsamling af missing data forår 2023), så resultaterne ikke bliver for "gamle". Præsenteres på SABCS 2023

- Ændret DBCGs retningslinje:

Pt som opfylder kriterier for SENOMAC studiet kan nu fravælge aksilrømning.

Skal følges med klinisk mammografi årligt til der er resultater

DBCG registrering frit valg aksil		
I alt	Fravalg ALND	ALND
161 pt	154 pt	7 pt

# 1 års PROM data fra SENOMAC studiet

The Breast 63 (2022) 16–23



ELSEVIER

Contents lists available at ScienceDirect

The Breast

journal homepage: [www.journals.elsevier.com/the-breast](http://www.journals.elsevier.com/the-breast)



Patient-reported  
biopsy with or  
SENOMAC trial

Efter inklusion af de første 2000 pt  
Pt fra Danmark og Sverige med 1 års follow-up pr 30/6-2020:  
1181 pt  
976 pt har besvaret spørgeskemaet  
Responstrate 82%  
Heraf 243 danske pt (1/4)

Matilda Appelgren  
Johan Ahlgren<sup>f,g</sup>,  
Lisa Rydén<sup>k,l</sup>, Malin  
Tove Filtenborg T  
SENOMAC Trialist

<sup>a</sup> Department of Molecular Medicine and Surgery, Karolinska Institutet, 171 76, Stockholm, Sweden

<sup>b</sup> Division of Cancer, Department of Breast, Endocrine Tumors and Sarcoma, Karolinska University Hospital, 171 64, Solna, Sweden

<sup>c</sup> Karolinska Comprehensive Cancer Center, Karolinska University Hospital, 171 64, Solna, Sweden

<sup>d</sup> Department of Neurobiology, Care Sciences and Society, Division of Nursing, Karolinska Institutet, 141 52, Huddinge, Sweden

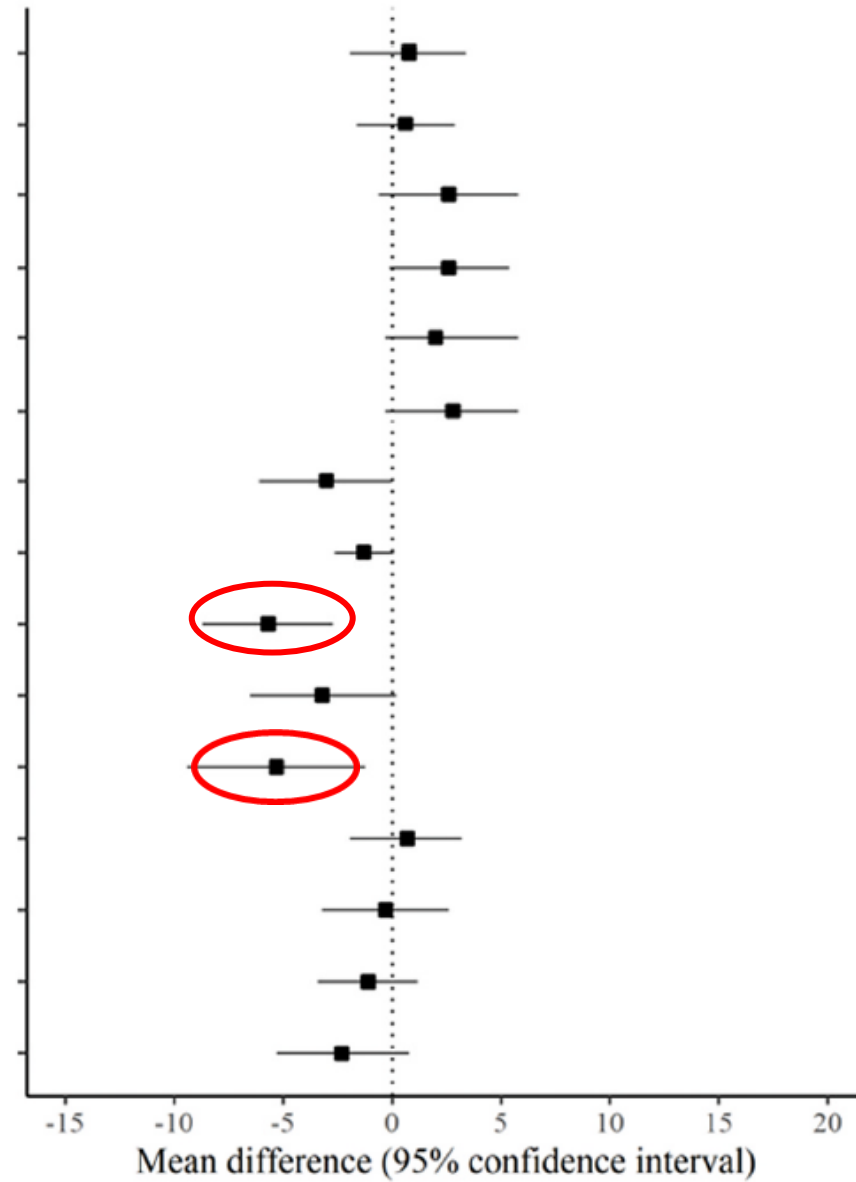
<sup>e</sup> Department of Health Sciences, Lund University, 221 00, Lund, Sweden

<sup>f</sup> Department of Oncology, University Hospital, 701 85, Örebro, Sweden

<sup>g</sup> Regional Oncology Centre, Mid-Sweden Health Care Region, 751 85, Uppsala, Sweden

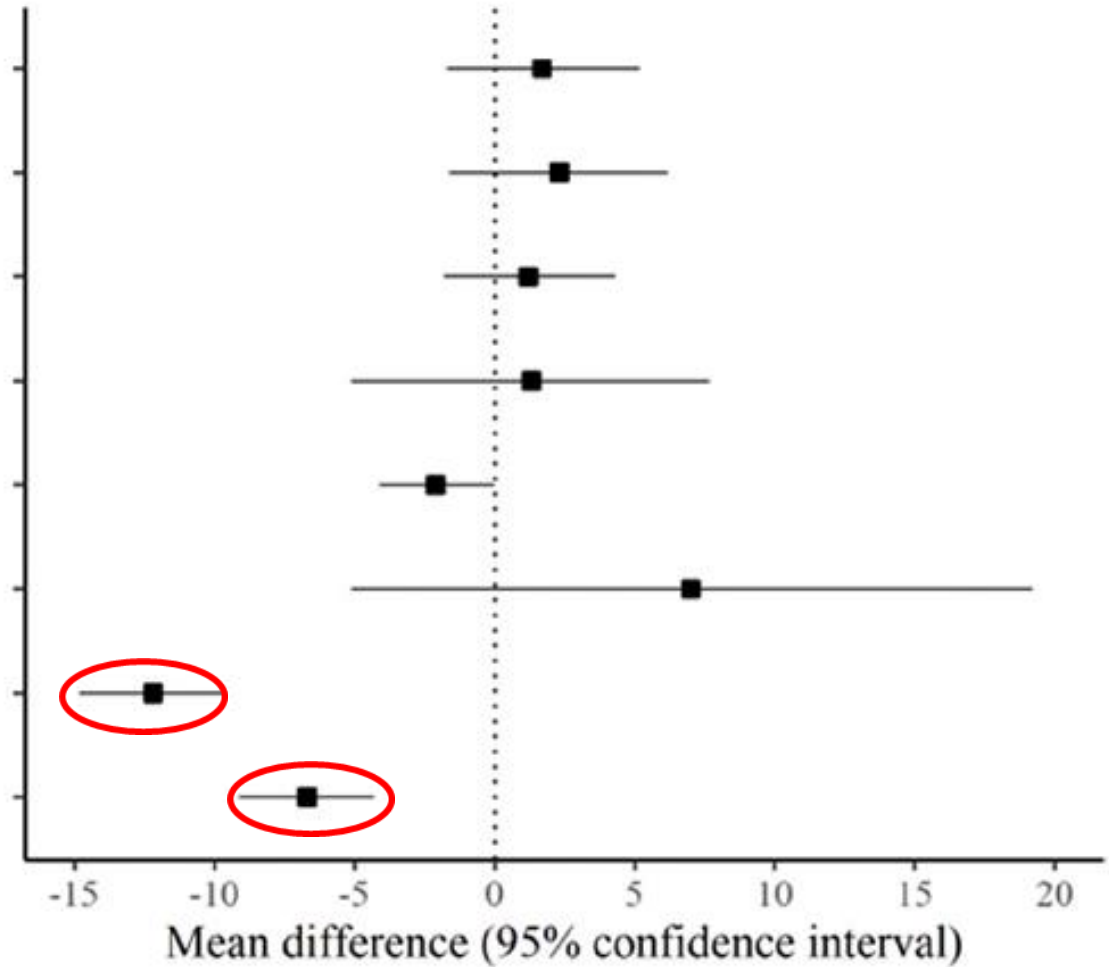
## EORTC QLQ-C30

Global health / QoL	0.8	(-1.9,3.4)
Physical function	0.6	(-1.6,2.9)
Role function	2.6	(-0.6,5.8)
Emotional function	2.6	(-0.1,5.4)
Cognitive function	2	(-0.3,5.8)
Social function	2.8	(-0.3,5.8)
<b>Fatigue</b>	<b>-3</b>	<b>(-6.1,0)</b>
<b>Nausea/vomiting</b>	<b>-1.3</b>	<b>(-2.6,0.1)</b>
<b>Pain</b>	<b>-5.7</b>	<b>(-8.7,-2.7)</b>
<b>Dyspnea</b>	<b>-3.2</b>	<b>(-6.5,0.2)</b>
<b>Insomnia</b>	<b>-5.3</b>	<b>(-9.4,-1.2)</b>
<b>Appetite loss</b>	<b>0.7</b>	<b>(-1.9,3.2)</b>
<b>Constipation</b>	<b>-0.3</b>	<b>(-3.2,2.6)</b>
<b>Diarrhea</b>	<b>-1.1</b>	<b>(-3.4,1.2)</b>
<b>Financial difficulties</b>	<b>-2.3</b>	<b>(-5.3,0.8)</b>



## EORTC QLQ-BR23

Body image	1.7	(-1.7,5.2)
Future perspective	2.3	(-1.6,6.2)
Sexual function	1.2	(-1.8,4.3)
Sexual enjoyment	1.3	(-5.1,7.7)
Systemic therapy side effects	-2.1	(-4.1,0)
Upset by hair loss	7	(-5.1,19.2)
Arm symptoms	-12.2	(-14.8,-9.6)
Breast symptoms	-6.7	(-9.1,-4.3)



## Lymph-ICF

Lymph-ICF total score

-6.8 (-8.8,-4.7)

Physical function

-11.2 (-13.7,-8.8)

Mental function

-6.8 (-9.3,-4.4)

Household activities

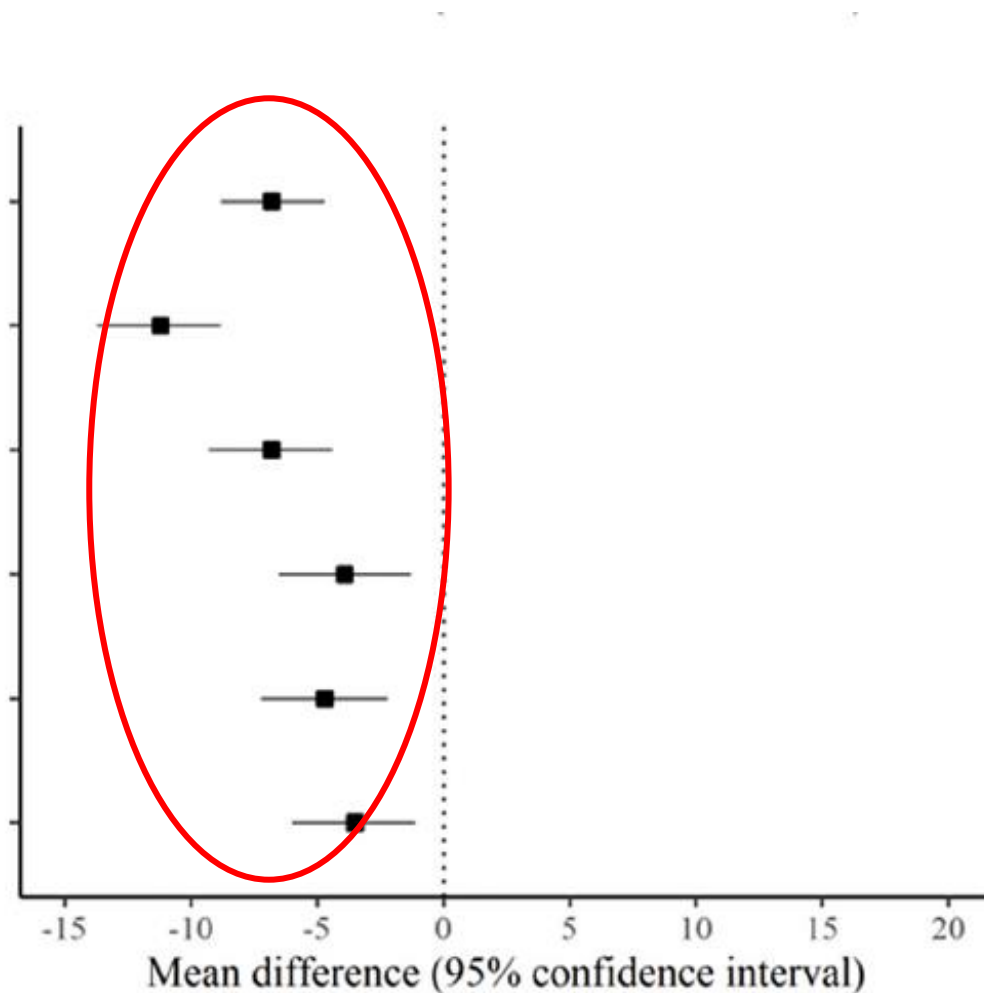
-3.9 (-6.5,-1.3)

Mobility activities

-4.7 (-7.2,-2.2)

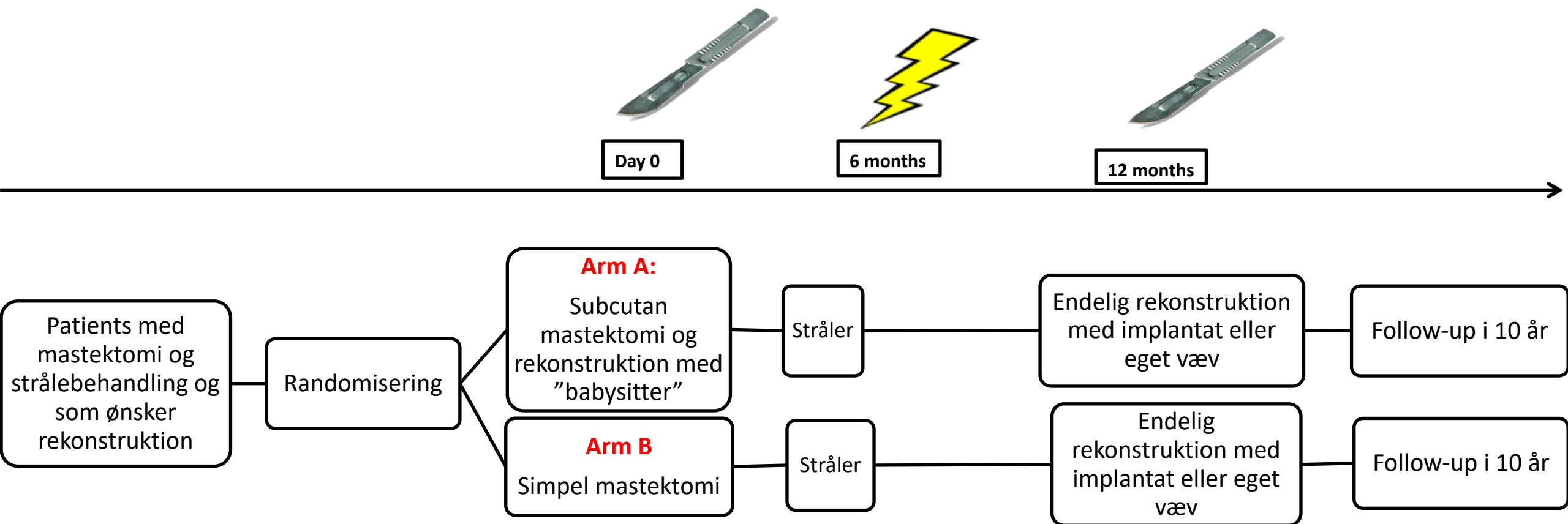
Life and social activities

-3.5 (-6,-1.1)



# The DBCG RT Recon Trial

Immediate-delayed vs sekundær rekonstruktion ved mastektomi og strålebehandling





# Inklusion:

- Nationalt studie (International deltagelse?)
- Inklusion start 1/1-2020 på RH/Herlev
- Inkluderede patienter til dato: 55 pt
  - 54 Gentofte Hospital/RH/Herlev Hospital
  - 1 AUH
  
- Fortsat åben for nye centre